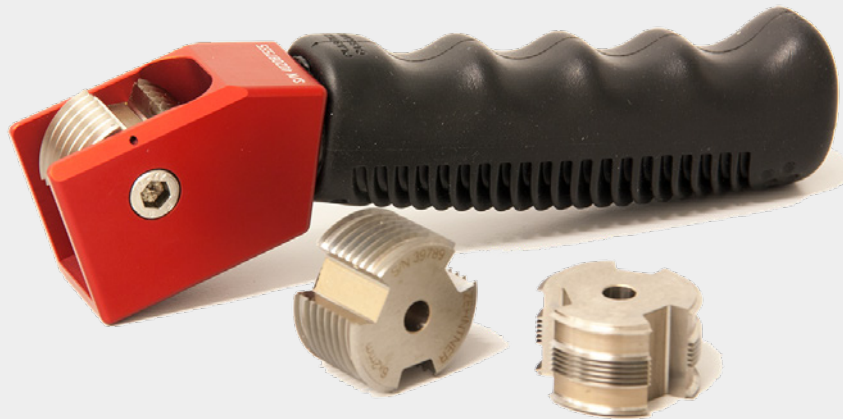


cross-cut tester



Principle

The cross-cut tester is a simple method to evaluate the adhesion of a paint or coating.

Method

A grid of parallel and perpendicular lines is cut through the coating and onto the substrate.

A tape is placed firmly onto the grid and torn off.

The grid surface is evaluated to determine the amount of material that has been removed.

Applications

- Determination of the adhesion of coatings
- Standards: ISO 2409 and ASTM D3359

